

GT50 GT60 **PB42 PB45 PB50** PB52 PB55 PB65 PB70



CLASSIC SERIES PB42 / PB45 / PB50



<b>CONTENTS</b>	
Our Ethos	3
Design	4
V-Warp® Technology	6
The power of three	7
Customisation	8
Ease of operation	14
Build process	15
Models	16
- PB42	17
- PB45	20
- PB50	23
Gallery	27



**OUR ETHOS**

# CELEBRATING OUR PAST WHILE SHAPING OUR FUTURE

Since Palm Beach Hull #1 slipped into the water in 1996, we've set ourselves an exacting set of standards.

With every new model we launch, we strive to deliver an exquisite combination of style, engineering, craftsmanship and performance.

There are currently seven models in our 'Classic' Series, and two in our 'GT' Series. All of them are built on our proprietary V-Warp® Technology and each one is a showcase of our creative ingenuity and attention to detail.

However, one other value has been key to our success.

Customer service.

Our owners take great care of our boats, and we take great care of our owners. For both parties, I think it's a matter of pride.

Mark Richards,  
CEO and Designer



## DESIGN

# INSPIRED BY TRADITION, DEDICATED TO INNOVATION

Inspired by the lobster boats of Maine, the graceful, sweeping lines of a Palm Beach are instantly recognisable. It's a style we've been refining for over twenty-five years and is now one of the hallmarks of our brand.

But while the exteriors always attract admiring glances and comments at the dock, the interiors are a testament to a perfect harmony of design and craftsmanship – expansive, luxurious, ergonomic to the n<sup>th</sup> degree. Spend just a few moments on board and you'll see that our attention to detail is fanatical.

ESCAPE INTO THE MOMENT.  
MANY MOMENTS.





## V-WARP® TECHNOLOGY

# A SYNERGY OF HULL DESIGN, EXOTIC MATERIALS AND BUILD PHILOSOPHY

All models in the classic series are built with our proprietary V-Warp® Technology.

Designed by our team of leading naval architects, the underwater geometry of our hull form was informed by the NASA and American Navy databases and then further developed by our CEO's experience as an ocean racing champion.

The warped, semi-displacement form reduces drag while adding the buoyancy, stability and lift that allows the boat to reach plane speed with minimal energy and effort.

Our extensive use of carbon fibre dramatically reduces weight, while our construction techniques maintain extreme rigidity. It's this combination that enables V-Warp® technology to deliver class-leading speed and stability while using only half the fuel of a similar sized boat.

**V-WARP® TECHNOLOGY**  
MAKES PERFECT SENSE OF  
THE ADAGE, "LESS IS MORE!"

LESS FUEL, **MORE RANGE**  
LESS POWER, **MORE SPEED**  
LESS WEIGHT, **MORE STABILITY**

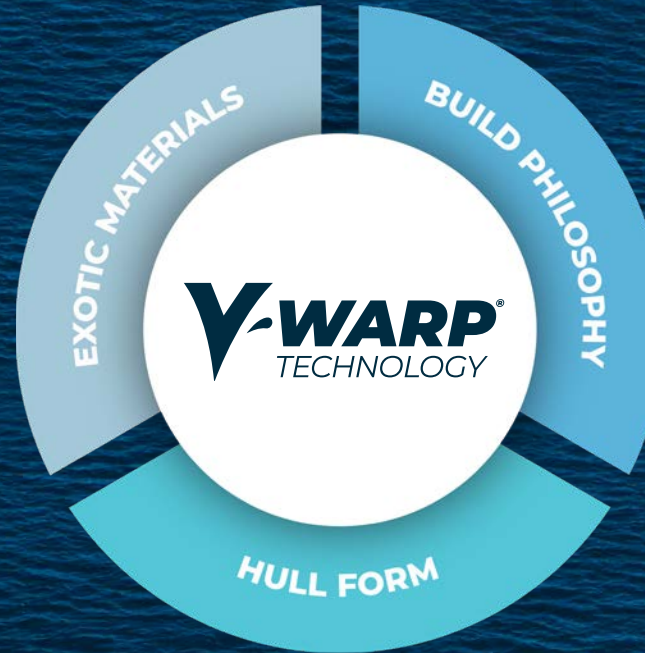
## THE POWER OF THREE

# PERFORMANCE, HANDLING AND EFFICIENCY.

There's no one reason that ensures Palm Beach motor yachts achieve such extraordinary performance characteristics. There are three!

It's the synergy of our hull form, our use of exotic materials and our build philosophy that delivers our speed, characteristically soft ride, ease of handling and extraordinary fuel efficiency.

Our combination of Vinylester-infused e-glass in the hull and carbon fibre in the deck and superstructure increases strength and durability while reducing weight.



All bulkheads and fixed furniture are fused to the hull. This 'torsion box' rigidity won't flex or creak. Large mass components are positioned to ensure longitudinal and transversal equilibrium.

Designed by ocean-racing champion Mark Richards and his team of naval architects, the hull design was informed by data from NASA and the US Navy. It delivers a low running attitude that reduces resistance and delivers a smooth, soft ride.



## CUSTOMISATION

# A PALM BEACH REFLECTS YOUR STYLE AS WELL AS OURS

Every model in the Classic Series is made to order. Quite simply, this means that construction does not begin until the owner is 100% delighted with the design and specifications of the yacht we are going to build.

There is a vast range of options to consider – engine and drive train, interior configurations, colour palette both inside and out, fixtures and fittings, fabrics and upholstery.

We'll give you expert advice throughout the process.





## CUSTOMISATION

### UPHOLSTERY AND DESIGN

We have a wide range of fabrics and upholstery to help create the style and ambience that will suit your onboard lifestyle. You can work with our inhouse team or, if you prefer, use an interior designer with whom you are already familiar.



## CUSTOMISATION

### UPHOLSTERY AND DESIGN



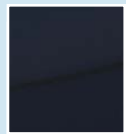
## CUSTOMISATION

### CHOICE OF HULL COLOURS

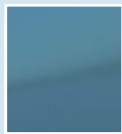
Hull colour is perhaps one of the boldest statements you make when commissioning a motor yacht. You can experiment with various combinations using the configurator on the 'Build a boat' page of our website. Of course, we also offer custom colours from a broader palette.



CLICK HERE FOR  
OUR ONLINE CONFIGURATOR



Flag Blue



Peacock Blue



Burgundy Red



Champagne



Flag Blue



Peacock Blue



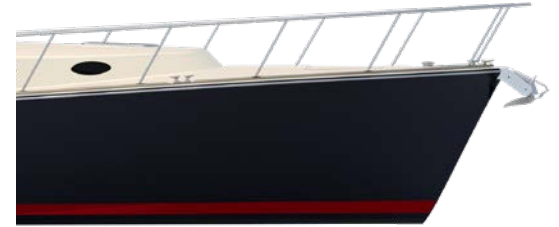
Flag blue with Sea Foam Green Antifoul



### BOOT STRIPES

These subtle details can create a very stylish effect in combination with your choice of hull colour.

Flag Blue hull with red boot stripe



Peacock Blue hull with black boot stripe



Burgundy Red hull with cream boot stripe



Champagne hull with black boot stripe



## CUSTOMISATION

### COMFORT AND STABILITY

While any boat built with V-Warp® Technology is inherently stable, we appreciate that some members of the family may be more sensitive to motion than others. We offer a variety of stabilisation options – the gyroscopic Seakeeper, Humphree Fin Systems and Trim Tabs have proven to be the most popular, and we can discuss what works best on your chosen model.



SUCH MOMENTS ARE NOT AN OPTIONAL EXTRA.  
THEY COME FREE WITH EVERY PALM BEACH!



## EASE OF OPERATION

# ALL PLAY AND NO WORK!

The PB42, PB45 and PB50 have all been ergonomically designed to make life easy for owner-operators. With just one or two pairs of hands, you'll find the workload is kept to a bare minimum.

The control interface at the helm station is easily configured to ensure you have the right information in front of you at all times. The combination of uninterrupted sight lines and intuitive IPS joystick controls makes it easy to manoeuvre the boat in crowded marinas and into tight slips. (You'll find the same controls on the PB50's flybridge and an optional pop-up joystick in the cockpit.)

When fully retracted, the window beside the helm station offers easy access to the deck where a cleat has been conveniently located for mooring.



## THE BUILD PROCESS

# YOU'LL BE WITH US AT EVERY STAGE OF THE JOURNEY

When the design has met your approval and before construction begins, you'll be invited to come and spend some time with us at our factory.

Whether you choose to do this at the start or in the middle of the build, you'll find this to be a fascinating opportunity to understand the process your boat will follow as it leaves the mould and then snakes through the factory from one specialist team to the next.

You will, of course, receive regular and constant updates and reports of the boats progress. Our schedule allows for any suggestions and comments you'd like to make.

You'll be on board from day 1!



## THE CLASSIC SERIES: PB42, PB45 AND PB50

# CONFIGURATIONS



### PB42 SEDAN

The PB42 has all the amenities of a much larger yacht – a climate-controlled-salon, a luxurious master stateroom and options for upper or lower galley to create the space you need.



### PB45 SEDAN

Single or double staterooms, upper or lower galleys, the PB45 can be configured to suit weekend trips with friends or longer journeys for adventurers who love luxury.



### PB50 SEDAN

The PB50 is rightfully regarded as a contemporary classic. Exquisitely beautiful, luxurious, stable and fast - head-turning beauty combined with class-leading efficiency.



### PB50 FLYBRIDGE

The PB50 Flybridge offers more onboard space, superior visibility for the helmsman and wind-in-the-hair thrills for those who love to entertain outdoors.



## CLASSIC SERIES

# THE PB42

Style, performance, comfort and efficiency – you'll find an abundance of these virtues on this exquisite and beautifully compact motor yacht.

Our designers have maximised the value of every inch of space on board. You'll enjoy a light-filled, climate-controlled salon, a luxurious master stateroom, a head with full-sized shower and the choice of upper or lower galley to suit your style of entertainment. The PB42 has all the amenities of a much larger yacht.

Like all models in the Classic Series, the PB42 is built on our proprietary V-Warp® Technology which guarantees a soft, stable ride and unsurpassed fuel efficiency.



## THE PB42 SEDAN

# VITAL STATISTICS

### TECHNICAL

LENGTH OVERALL	48' 3"	14.72 M
LENGTH ON DECK	42' 10"	13.1 M
BEAM	14' 8"	4.48 M
AIR DRAFT	12' 6"	3.8 M
DRAFT WITH IPS	3' 1"	0.93 M
DISPLACEMENT	28,263 LBS	12,800 KGS

### CAPACITY

FUEL CAPACITY	317 GAL	1,200 L
WATER CAPACITY	169 GAL	640 L
HOLDING TANK	37 GAL	140 L

### POWER AND CONSUMPTION

#### STANDARD ENGINES

2 X VOLVO PENTA IPS 650S @ 480 HP

TOP SPEED 32 KNOTS

CRUISE SPEED 27 KNOTS

RANGE 360 NM / 18 GPH / 21 KN



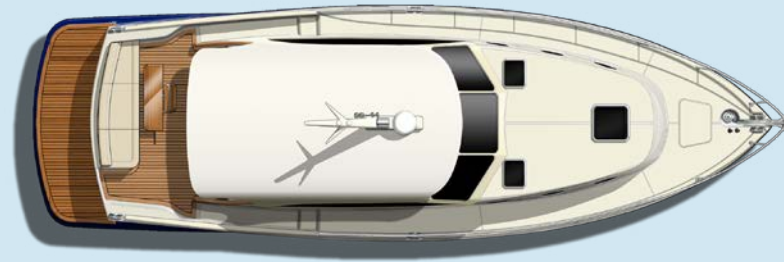
All figures provided are for the standard configuration of the vessel, recorded at half-load at the time of testing. Different test conditions and customisations from the standard model may result in variations for your yacht.

## THE PB42

# LAYOUTS

Flexibility is at the heart of our design philosophy and process and the internal space of the PB42 can be configured to meet your lifestyle needs and requirements.

Choose the lower galley and you'll find you have plenty of space to entertain groups of friends throughout the day. The option of an upper galley creates the additional space below that serves as a quiet lounge area, or transforms into an additional comfortable berth to accommodate extra guests.



**PB42 SEDAN WITH UPPER GALLEY**



**PB42 SEDAN WITH LOWER GALLEY**



## CLASSIC SERIES

# THE PB45

Impeccably styled, beautifully engineered, the PB45 is perfect for those who love luxury and the opportunity for adventure.

On a day trip with family and friends, you'll revel in spacious, light-filled entertaining spaces. And on longer, more exploratory outings, you'll truly appreciate our unique combination of soft, stable ride and extraordinary fuel-efficiency.

The PB45 has a cruising range of 323 nautical miles at 21 knots and combines performance with ease of handling in all conditions.



## THE PB45 SEDAN

# VITAL STATISTICS

### TECHNICAL

LENGTH OVERALL	52' 6"	16 M
LENGTH ON DECK	47'	14.3 M
BEAM	14' 8"	4.48 M
AIR DRAFT	12' 7"	3.8 M
DRAFT WITH IPS	3'	0.91 M
DISPLACEMENT	29,365 LBS	13,320 KGS

### CAPACITY

FUEL CAPACITY	317 GAL	1,200 L
WATER CAPACITY	172 GAL	650 L
HOLDING TANK	53 GAL	200 L

### POWER AND CONSUMPTION

#### STANDARD ENGINES

2 X VOLVO PENTA IPS 650S @ 480 HP

TOP SPEED	34 KNOTS
CRUISE SPEED	28 KNOTS
RANGE	323 NM / 21 GPH / 21 KN



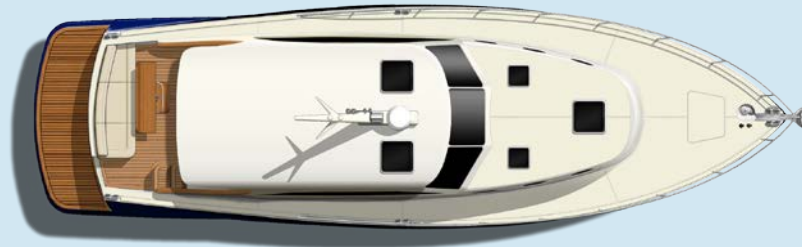
All figures provided are for the standard configuration of the vessel, recorded at half-load at the time of testing. Different test conditions and customisations from the standard model may result in variations for your yacht.

## THE PB45

# LAYOUTS

The sweeping, gracious lines of a PB45 are clear to see. But, to a designer's eye, form always follows function. Once we know how you intend to use the boat, we can then configure the internal spaces and amenities to suit your individual needs.

Upper or lower galley, single or double staterooms – customisation is at the heart of what we do at Palm Beach and the choices are always yours.



**PB45 SEDAN WITH UPPER GALLEY**

**PB45 SEDAN WITH LOWER GALLEY**



## CLASSIC SERIES

# THE PB50

Celebrated as 'Best New Powerboat' at its US debut, the PB50 is available in both Sedan and Flybridge versions. Its sweeping, gracious style above the waterline conceals a design revolution beneath the surface.

The warped, semi-displacement form of our unique V-Warp® Technology delivers an unbeatable combination of soft ride, stability, high speed performance and class-leading fuel efficiency.

She is, quite simply, the envy of every yacht in her class.



## THE PB50 SEDAN

# VITAL STATISTICS

### TECHNICAL

LENGTH OVERALL	56' 4"	17.18 M
LENGTH ON DECK	50' 8"	15.4 M
BEAM	14' 8"	4.48 M
AIR DRAFT	12' 7"	3.8 M
DRAFT WITH IPS	2' 11"	0.89 M
DISPLACEMENT	30,640 LBS	13,900 KGS

### CAPACITY

FUEL CAPACITY	450 GAL	1,700 L
WATER CAPACITY	172 GAL	650 L
HOLDING TANK	53 GAL	200 L

### POWER AND CONSUMPTION

#### STANDARD ENGINES

2 X VOLVO PENTA IPS 650S @ 480 HP

TOP SPEED 33 KNOTS

CRUISE SPEED 28 KNOTS

RANGE 435 NM / 22 GPH / 21 KN



All figures provided are for the standard configuration of the vessel, recorded at half-load at the time of testing. Different test conditions and customisations from the standard model may result in variations for your yacht.



## THE PB50 FLYBRIDGE

# VITAL STATISTICS

### TECHNICAL

LENGTH OVERALL	56' 4"	17.18 M
LENGTH ON DECK	50' 8"	15.4 M
BEAM	14' 8"	4.48 M
AIR DRAFT	17' 9"	5.41 M
DRAFT WITH IPS	2' 11"	0.89 M

### CAPACITY

FUEL CAPACITY	450 GAL	1,700 L
WATER CAPACITY	172 GAL	650 L
HOLDING TANK	53 GAL	200 L

### POWER AND CONSUMPTION

#### STANDARD ENGINES

2 X VOLVO PENTA IPS 650S @ 480 HP	
TOP SPEED	33 KNOTS
CRUISE SPEED	28 KNOTS
RANGE	435 NM / 22 GPH / 21 KN



All figures provided are for the standard configuration of the vessel, recorded at half-load at the time of testing. Different test conditions and customisations from the standard model may result in variations for your yacht.

## THE PB50

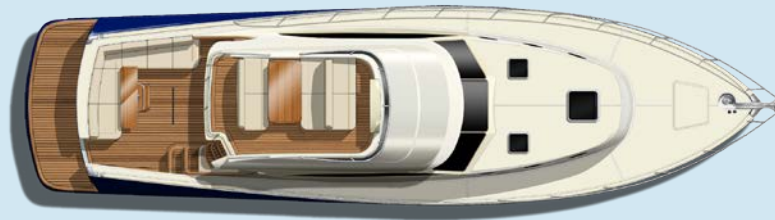
# LAYOUTS

Whether you choose the sedan or flybridge model, the PB50 has been designed for those who love to relax and entertain friends and family while enjoying the great outdoors.

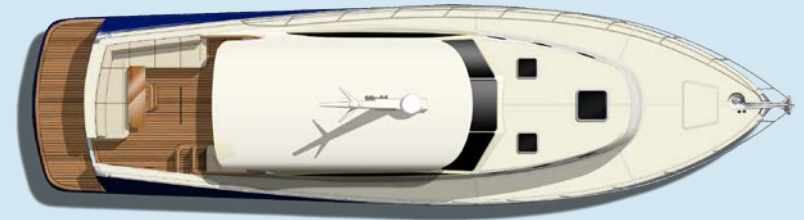
To ensure you're never far from the action, we offer the option of a rear galley that will give you uninterrupted sight lines, fore and aft, along the single level deck.

For additional shade, the roof can be extended with a long canvas awning that creates a huge, protected space for guests to mingle and relax.

### PB50 FLYBRIDGE WITH AFT GALLEY



### PB50 SEDAN WITH LOWER GALLEY



OUR STORY TOLD IN PICTURES



THE PB42 GALLERY



PALM BEACH CLASSIC SERIES PB42 / PB45 / PB50

THE PB42 GALLERY



THE PB45 GALLERY



THE PB45 GALLERY



THE PB50 GALLERY





THE PB50 GALLERY



FOR ANY ENQUIRIES,  
PLEASE CONTACT YOUR NEAREST  
PALM BEACH REPRESENTATIVE.

US HEAD OFFICE  
TEL: +1 877 2914220

AUSTRALIAN HEAD OFFICE  
TEL: +61 2 9979 5601

OR REACH OUT TO US THROUGH  
[PALMBEACHMOTORYACHTS.COM](http://PALMBEACHMOTORYACHTS.COM)

PROUD TO BE PART OF THE

**GB** MARINE  
GROUP

